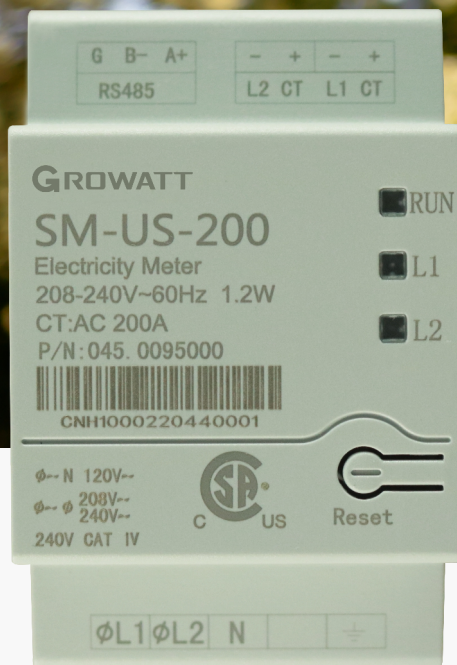


SM-US-200

Smart Meter

- ANSI C12.20, Class 1.0
- With 2 CTs
- Support multiple EMS modes



P O W E R
- I N G O
T O M O -
R R O W O



<https://us.growatt.com>

Model	SM-US-200
Electrical Data	
Nominal Voltage	208V/240V
Voltage Range	88%~110%
Nominal Current	200A
Nominal Frequency	60Hz
Voltage Input Type	1P2W,2P3W
Serial Reporting Interval	< 1s
Accuracy Class	ANSI C12.20 1.0
General Data	
Dimensions(W/H/D)	2.1/3.5/2.0 in (54.1/87.8/52 mm)
Weight	0.44lbs/0.2kg
Operation Temperature Range	-22°F~131°F (-30°C~55°C)
Relative Humidity	5 ~95%Non-condensing
Accessories	2 pcs 200A Rated CT
Communication	RS485
Warranty	5 Years
UL 1741, CSA-C22.2 No.107.1-01	