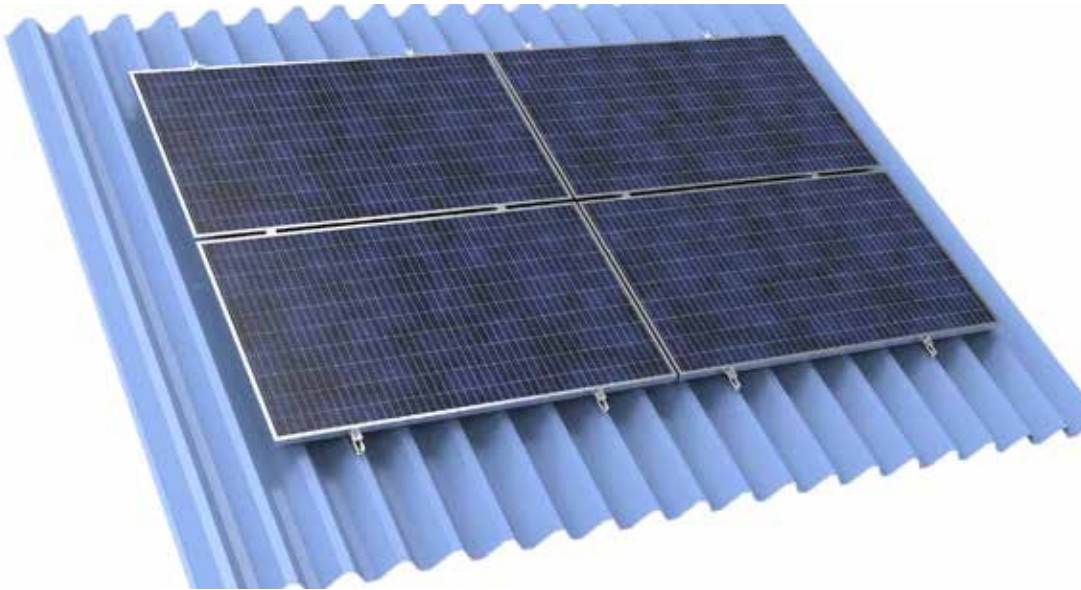


# Railless mounting



**Landscape  
Orientation**

## Features

- Less installation time
- Cost effective
- Easy warehouse management
- Rail length customizable

## Technical data

- Roof: Trapezoidal, corrugated, sandwich roofing, standing seam
- Roof slope: Up to 45°
- Building height: Up to 20 m
- Wind speed: Up to 60 m/s
- PV module: Framed
- Module orientation: Landscape, portrait
- Material: AL 6005 T5 & SUS 304, 410
- Warranty: 10 years

## System components



## Installation procedure



Secured the mini rail along with the roof ridges with tapping screw(6.3x25)



Fixing the panels by end clamps



Fixing the panels on rails by mid clamps