

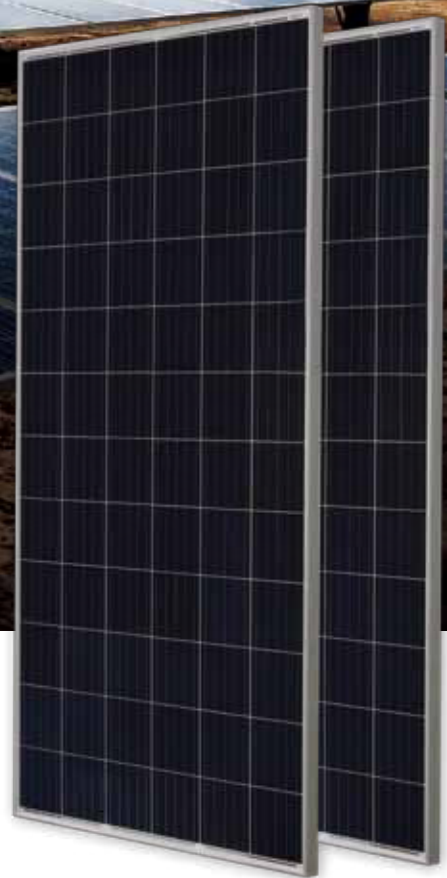


345W Module

JAP72S09 325-345/SC Series

Introduction

This time-tested legacy module series has been proven to be one of the powerful and most reliable products offered by JA Solar and the most popular choice by PV system installers and customers around world.



5 busbar solar cell design



Low cost



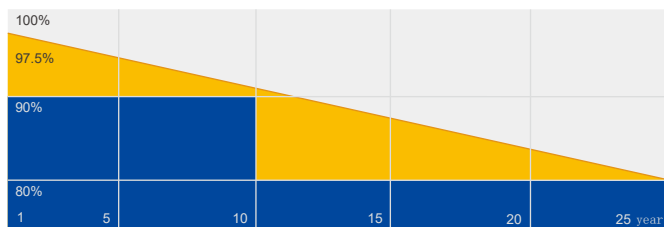
Anti-PID



Highly reliable due to strict quality control

Superior Warranty

- 12-year product warranty
- 25-year linear power output warranty



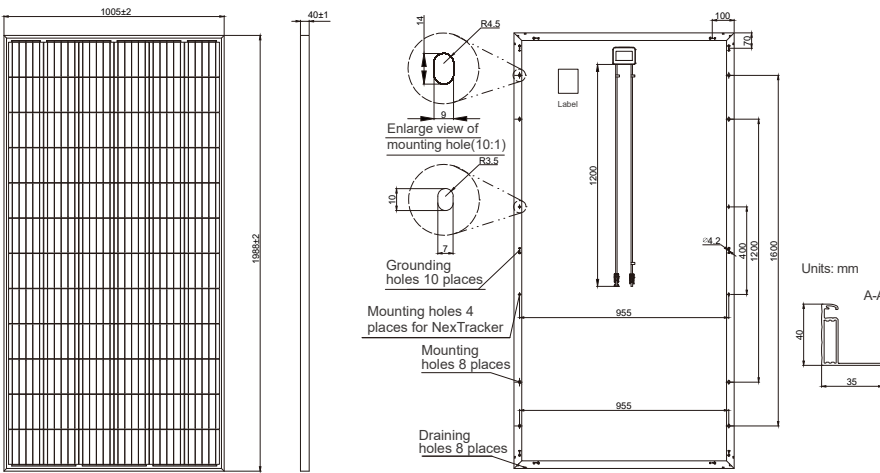
■ JA Linear Power Warranty ■ Industry Warranty

Comprehensive Certificates

- IEC 61215, IEC 61730, UL 1703
- ISO 9001: 2015 Quality management systems
- ISO 14001: 2015 Environmental management systems
- OHSAS 18001: 2007 Occupational health and safety management systems
- IEC TS 62941: 2016 Terrestrial photovoltaic (PV) modules – Guidelines for increased confidence in PV module design qualification and type approval



MECHANICAL DIAGRAMS



SPECIFICATIONS

| | |
|--------------------------|---------------------------------------|
| Cell | Poly |
| Weight | 22.6kg±3% |
| Dimensions | 1988±2mm×1005±2mm×40±1mm |
| Cable Cross Section Size | 4mm ² (12AWG) |
| No. of cells | 72(6x12) |
| Junction Box | IP67, 3 diodes |
| Connector | QC 4.10 (1000V) QC 4.10-35 (1500V) |
| Packaging Configuration | 27 Per Pallet |

Remark: customized frame color and cable length available upon request

ELECTRICAL PARAMETERS AT STC

| TYPE | JAP72S09 -325/SC | JAP72S09 -330/SC | JAP72S09 -335/SC | JAP72S09 -340/SC | JAP72S09 -345/SC |
|--|---|---------------------|---------------------|---------------------|---------------------|
| Rated Maximum Power(Pmax) [W] | 325 | 330 | 335 | 340 | 345 |
| Open Circuit Voltage(Voc) [V] | 45.56 | 45.83 | 46.10 | 46.39 | 46.68 |
| Maximum Power Voltage(Vmp) [V] | 36.90 | 37.18 | 37.45 | 37.74 | 38.04 |
| Short Circuit Current(Isc) [A] | 9.28 | 9.35 | 9.42 | 9.48 | 9.55 |
| Maximum Power Current(Imp) [A] | 8.81 | 8.88 | 8.95 | 9.01 | 9.07 |
| Module Efficiency [%] | 16.3 | 16.5 | 16.8 | 17.0 | 17.3 |
| Power Tolerance | 0~+5W | | | | |
| Temperature Coefficient of Isc(α _{Isc}) | +0.058%/C | | | | |
| Temperature Coefficient of Voc(β _{Voc}) | -0.330%/C | | | | |
| Temperature Coefficient of Pmax(γ _{Pmp}) | -0.400%/C | | | | |
| STC | Irradiance 1000W/m ² , cell temperature 25°C, AM1.5G | | | | |

Remark: Electrical data in this catalog do not refer to a single module and they are not part of the offer. They only serve for comparison among different module types.
*For NexTracker installations static loading performance: front load measures 2400Pa, while back load measures 2400Pa.

ELECTRICAL PARAMETERS AT NOCT

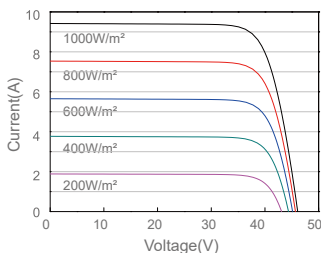
| TYPE | JAP72S09 -325/SC | JAP72S09 -330/SC | JAP72S09 -335/SC | JAP72S09 -340/SC | JAP72S09 -345/SC |
|--------------------------------|---|---------------------|---------------------|---------------------|---------------------|
| Rated Max Power(Pmax) [W] | 240 | 244 | 248 | 252 | 256 |
| Open Circuit Voltage(Voc) [V] | 43.38 | 43.57 | 43.77 | 43.96 | 44.16 |
| Max Power Voltage(Vmp) [V] | 35.17 | 35.38 | 35.59 | 35.81 | 36.03 |
| Short Circuit Current(Isc) [A] | 7.33 | 7.40 | 7.47 | 7.55 | 7.62 |
| Max Power Current(Imp) [A] | 6.82 | 6.90 | 6.97 | 7.04 | 7.11 |
| NOCT | Irradiance 800W/m ² , ambient temperature 20°C, wind speed 1m/s, AM1.5G | | | | |

OPERATING CONDITIONS

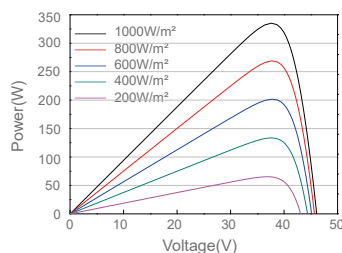
| | |
|----------------------------|---------------------------------|
| Maximum System Voltage | 1000V/1500V DC (UL) |
| Operating Temperature | -40°C~+85°C |
| Maximum Series Fuse | 20A |
| Maximum Static Load,Front* | 5400Pa(112 lb/ft ²) |
| Maximum Static Load,Back* | 2400Pa(50 lb/ft ²) |
| NOCT | 45±2°C |
| Fire Performance | Type 1 |

CHARACTERISTICS

Current-Voltage Curve JAP72S09-335/SC



Power-Voltage Curve JAP72S09-335/SC



Current-Voltage Curve JAP72S09-335/SC

